

Further Ferroelectric Experimental Results

Simple Diode Configuration

2 June 2013

Photo 1 Anode Side of Setup \ change CAP to 2.7nF ; rated at 40KV

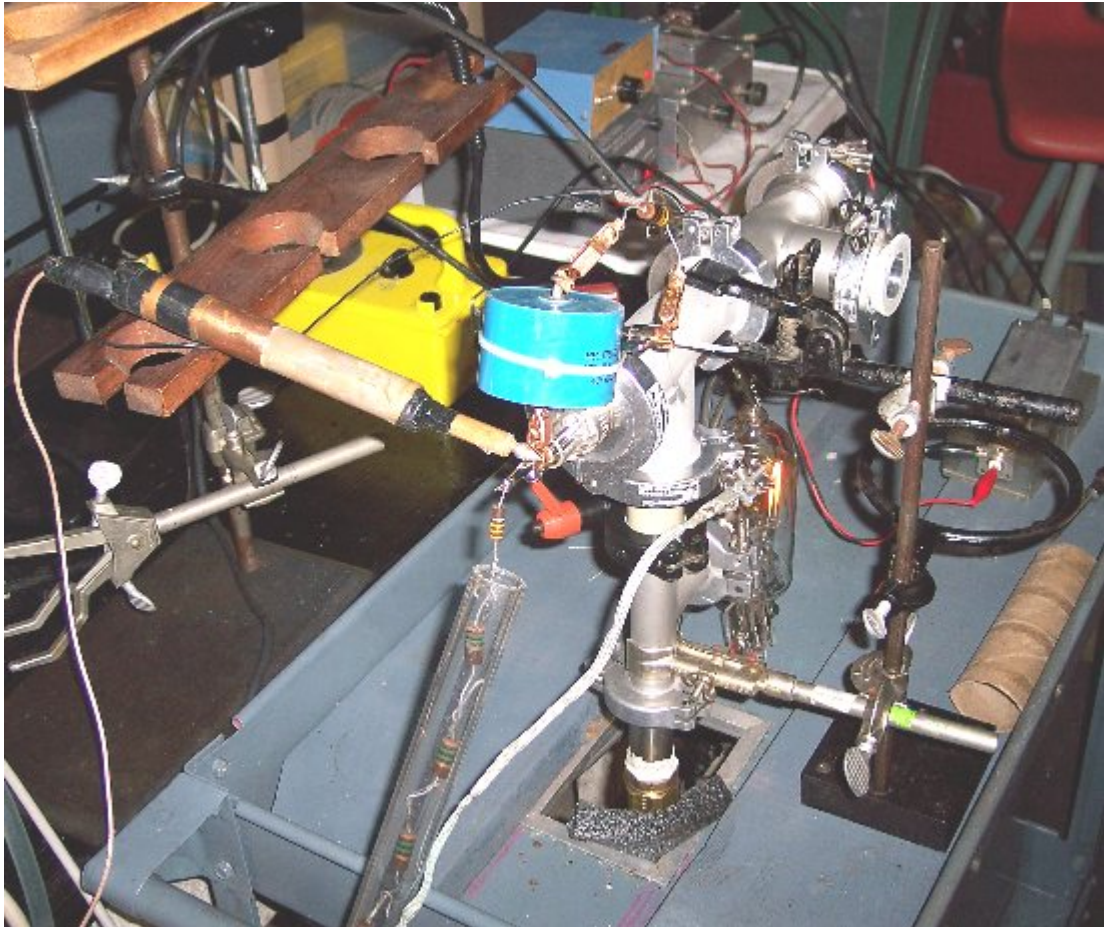


Photo 2 DSO Anode to GND via 10 ohm Resistor



2V/div X 1000 => 12KV

Photo 3 HV probe/ across 10 ohm CVR/ @ 12KV

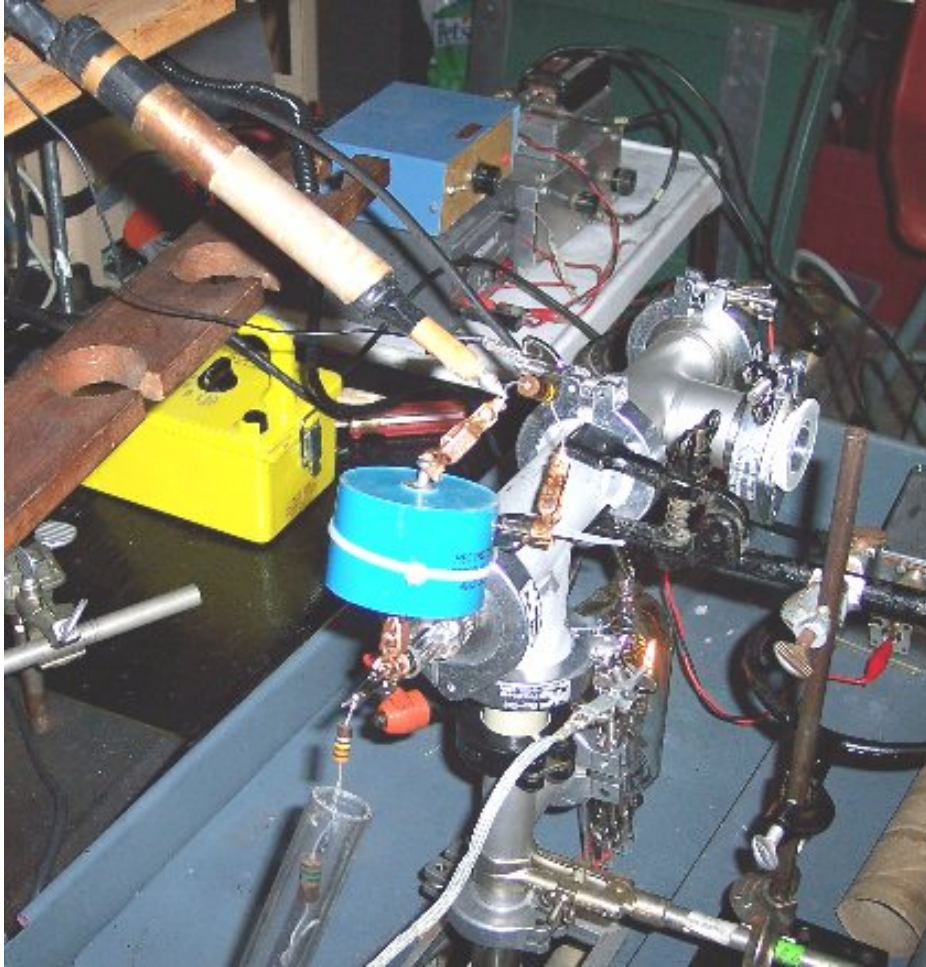
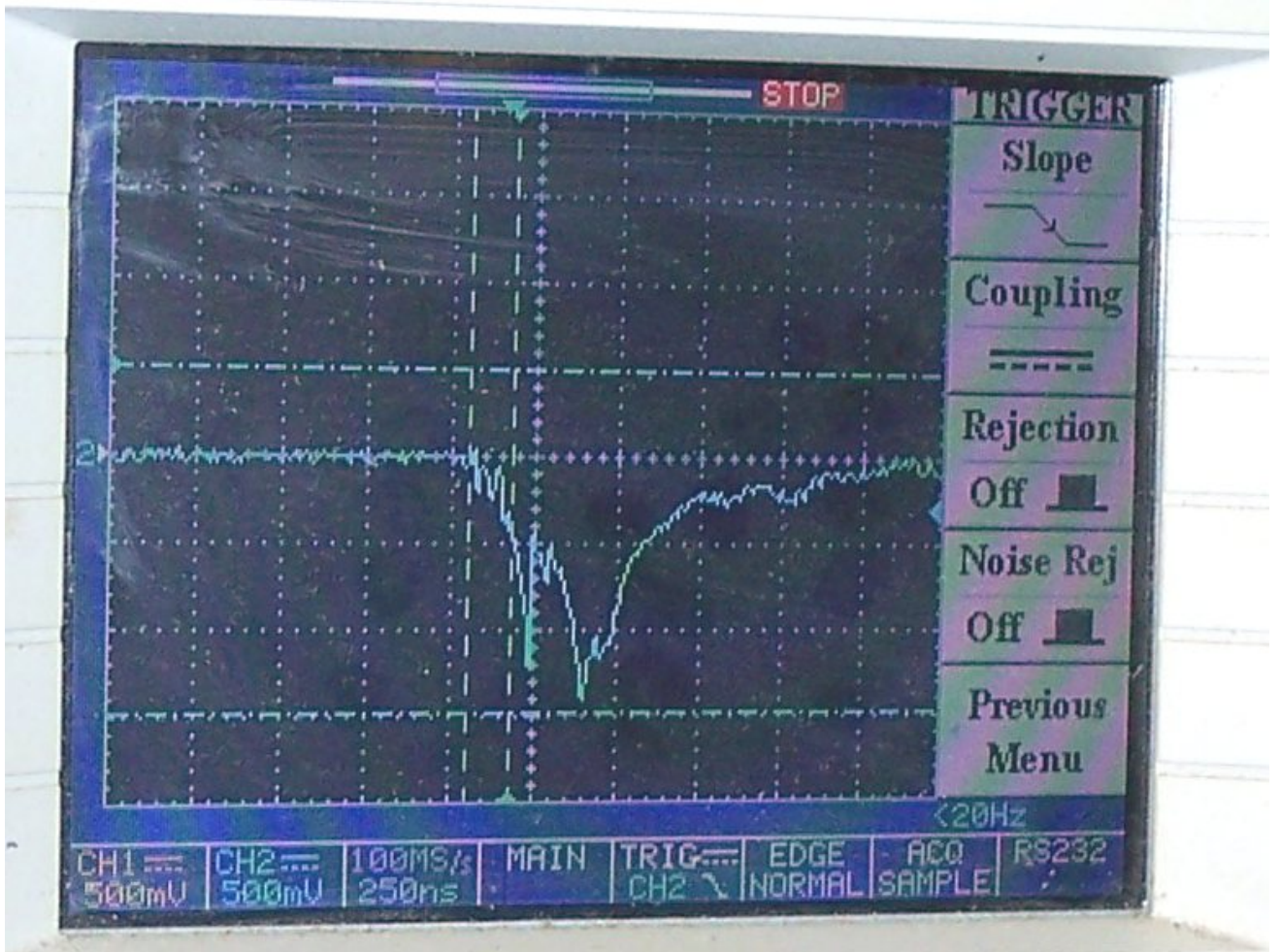


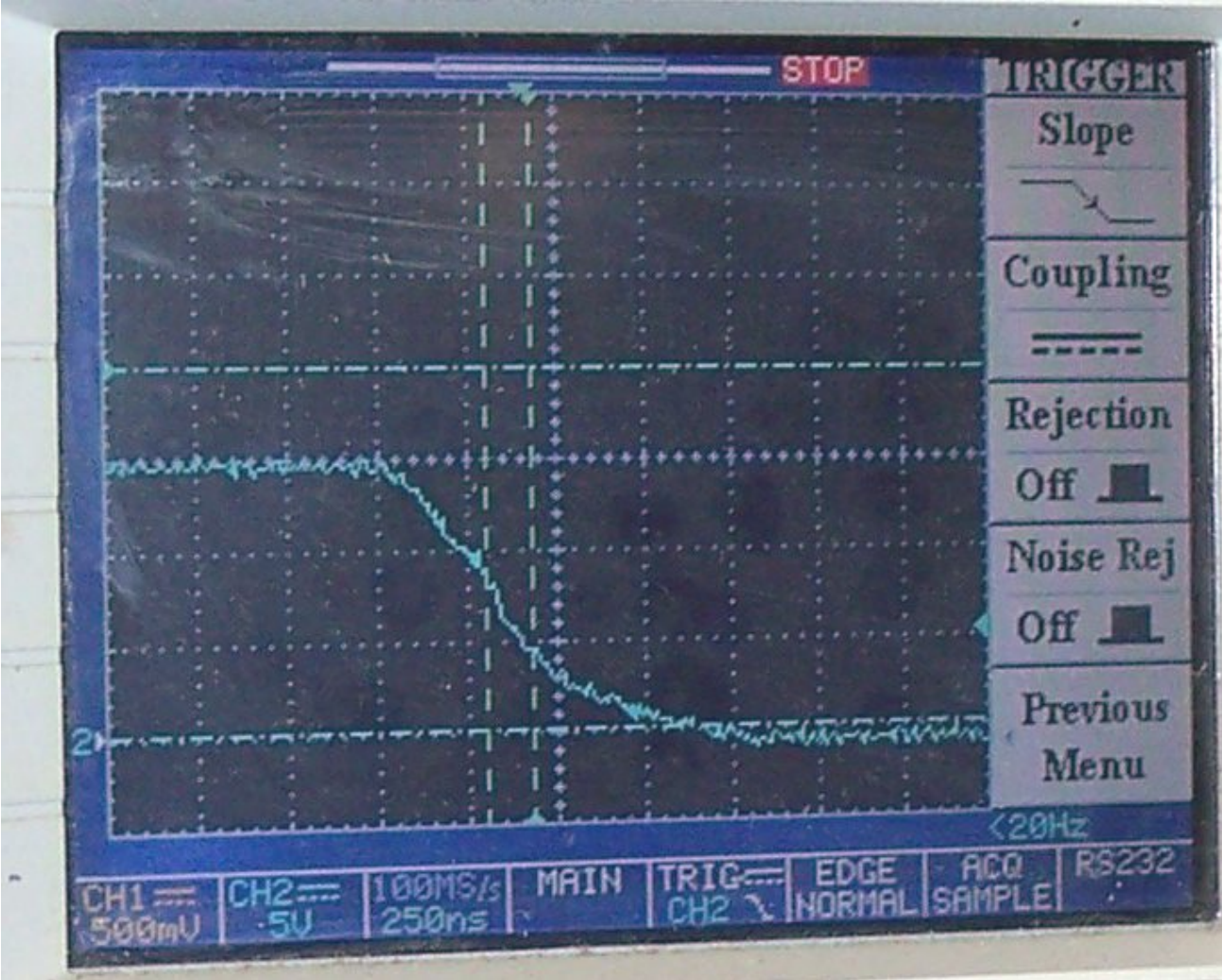
Photo 4 DSO waveform/ 10 ohm CVR



$0.5V/div \times 1000 \Rightarrow 500V/div / 100AMPS\ peak$

Note showing captured optimum peak/ waveform differs from shot to shot.

Photo 5 DSO Waveform/ Increase V charge 15KV



5 V/div X 1000

Photo 6 DSO / CVR at 15KV



500V/div ==>> 150 AMPS PEAK ??